



# Dumont Kitchen Sink

## ENAMELED CAST IRON



Dumont Kitchen Sink ( 212-1089 ).

- NOTES:** - Strainer Outlets 3-1/2"  
 - Counter Cut Out - 31" x 20" with 1" Radius  
 Corners

Eljer assumes no responsibility or liability for local or state regulations which deviate from national standards. It shall be the responsibility of the installer to comply with local codes and standards prior to installation of any Eljer product.

- 33" (838 mm) Length, 22" (559 mm) Width, 8" (203 mm) Depth - 95 lbs., Cubes 5.83
- Self-Rimming, Double-Bowl Sink
- Two Spacious 13-7/8" x 16-1/2" x 8" Bowls
- Offset Drains Provide More Flat Space in Bowls
- Available in Three-, Four- or Five-Hole Models
- Optional Cutting Board, Wire Racks and Wire Basket Available

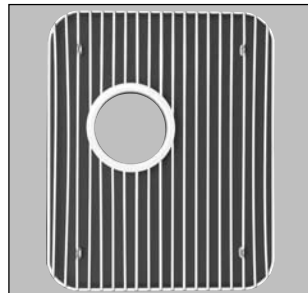
- **212-1088** Enameled Cast Iron, Self-Rimming, Double-Bowl Kitchen Sink with Three Faucet Holes
- **212-1089** Enameled Cast Iron, Self-Rimming, Double-Bowl Kitchen Sink with Four Faucet Holes
- **212-1090** Enameled Cast Iron, Self-Rimming, Double-Bowl Kitchen Sink with Five Faucet Holes

### Optional Accessories

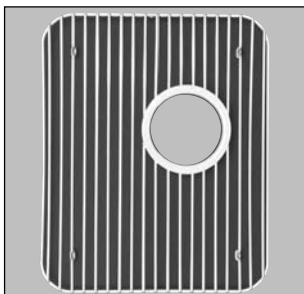
- **282-3485** Hardwood Cutting Board - Fits Both Bowls
- **805-3160** White Plastic-Coated Wire Rack - Fits Left Bowl
- **805-3161** White Plastic-Coated Wire Rack - Fits Right Bowl
- **805-2165** White Plastic-Coated Wire Basket - Fits Both Bowls
- **803-0580** Polished Chrome Kitchen Sink Strainer with Removable Crumb Cup, For 3-1/2 Outlet
- **803-0586** Polished Brass Kitchen Sink Strainer with Removable Crumb Cup, For 3-1/2 Outlet



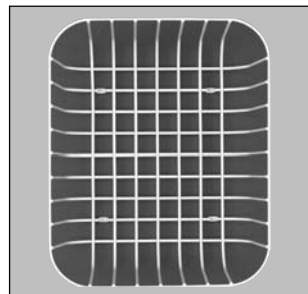
282-3485 Hardwood Cutting Board



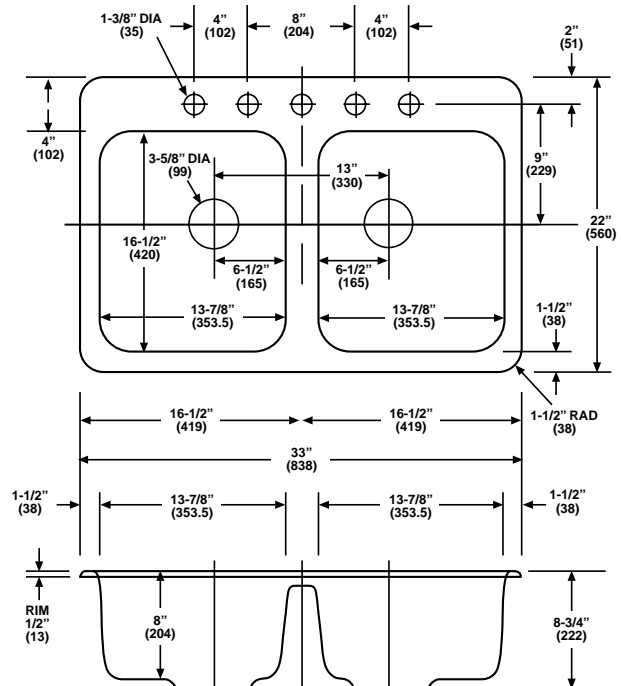
805-3161 White Plastic-Coated Wire Rack - Fits Right Bowl



805-3160 White Plastic-Coated Wire Basket - Fits Left Bowl



805-2165 White Plastic-Coated Wire Basket - Fits Both Bowls



FAUCETS ARE NOT INCLUDED.  
 ALL FIXTURE DIMENSIONS ARE NOMINAL AND MAY VARY WITHIN THE RANGE OF TOLERANCES ESTABLISHED BY ASME/ANSI STANDARD A112.19.1M  
 ALL MEASUREMENTS SHOWN ARE SUBJECT TO CHANGE OR CANCELLATION.

